



WLUG Survey 2005

Collated by Craig Box
25 September



Section 1: Membership

- Are you a paid member of the Waikato Linux Users Group?
 - 50% yes
- If not, why not?

1. Are you a paid member of the Waikato Linux Users Group?

Answer	Count	Percentage
No answer	1	1.75%
Yes (Y)	29	50.88%
No (N)	27	47.37%



Why not a member?

- At this current stage I don't think I have A) anything to offer the LUG B) see no compelling need to join. | Basic Lazyness, Will rectify shortly | benefits are not attractive. | Did not want to join at (near) the end of the membership year. | didn't get around to it, also since I live about 1 hour's drive away (but still in the waikato) from Hamilton I don't attend meetings and can't participate except through the mailing list | Don't actually use linux due to satisfaction with XP and lack of time to learn linux to the same level as windows. | Err. I'm not in the Waikato. I don't come to meetings, etc. | Haven't seen a benefit in it yet. At times rather university centric | Havn't gotten around to paying! | I didnt know there was a membership fee | I don't like the fact that wlug only allow subscriptions for a full year and that they don't start from the date you pay. | I don't use Linux enough to justify it | I have been unable to attend the WLUG meetings due to my living location and lack of transport. | I live in Meremere, and I can only attend meeting irregularly | I live outside your area. | I never got round to being a paid member... | I never signed up because I've moved countries. | In all honesty, pure laziness | Live out of town | Live outside the Waikato | never got round to it | No benefit for me. I'm still not actually using Linux at home but want to be ready when i bite the bullet. | Since I cannot attend meetings its not a focus on a daily basis and I dont think of it | Started a new business, money is pretty limited for the moment. Once things are better, I'll definitely be renewing my membership. | Student - No money! | was once, but it ran out | While I'm interested in Linux, I don't have the time to be more than a lurker on the mailing list.

2. Why not?

- Out of town
- Lazy
- No benefit/Not experienced enough with Linux
- I don't like the fact that wlug only allow subscriptions for a full year and that they don't start from the date you pay.



Section 1: Membership

- Do you feel you have received value for money from your membership fee?
 - 100% yes!
- I feel the cost of WLUG membership, \$20/year, is:
 - 89% just right, 7% too low, 4% too high
- Do you feel we clearly communicate the benefits of membership, and how to sign up?
 - 62% yes

2. Do you feel you have received value for money from your membership fee?

100% yes.

3. I feel the cost of WLUG membership, \$20/year, is:

Answer	Count	Percentage
No answer	0	0.00%
Too low (low)	4	7.02%
Just right (ok)	51	89.47%
Too high (high)	2	3.51%

4. Do you feel we clearly communicate the benefits of membership, and how to sign up?

Answer	Count	Percentage
No answer	1	1.75%
Yes (Y)	35	61.40%
No (N)	21	36.84%



How could we make this better?

- Advertising (at installfests etc) - "Why should I become a member of WLUG". Also, should be able to explain it in a few sentences to anyone who asks. | Benefits ??? what are they where are they ?? A wiki is fine but you need a website too so we can find stuff. | Communicate them? I'm a frequent visitor to www.wlug.org.nz and a member of the mailing list - but apart from the fact that the WLUG has a Library, I'm not aware of any other benefits of being a WLUG member. | distribute pamphlets/information more widely. have information days with the public and exchange talks with other user groups. | Give me an incentive to read it ... | how to sign up yes the benefits of membership for someone who isn't close to Hamilton are not clear | I don't really know what I get for signing up - I know I get a shell account, but I don't really need one, and I know I get access to a library I would never use. Don't have a clue how to signup | I have not check recently (noticed some changes to the site) but benefits should be listed on the membership page clearly. Also, there is no "join wlug" on the front page, forcing a potential member to look around the site. | I'm kind of like the fact you don't | Just make it more obvious... Tough question really. I've found the page, but you need to go through a couple pages to find them. | Listing of benefits on the membership form. Viral marketing with people saying how cool it is to be a member of WLUG and use their services. | maybe by making it more known. also is it mandatory? or can people just come and be a part of this group regardless? | more info about getting shell/email accounts | more info on and off line | No idea. But I don't know what the benefits are so I guess they haven't been clearly communicated to me. :) | not sure | Promote it | some users may not know about email and shell accounts

5. How could we make this better?

Most people who answered are not aware of what they were going to get when they signed up. Some didn't even know if it was mandatory or not. You will have noticed this has changed on the new membership form.

- "No idea. But I don't know what the benefits are so I guess they haven't been clearly communicated to me. :)"
- "I kind of like the fact you don't"
- "Also, should be able to explain it in a few sentences to anyone who asks."



How could we make this better?

- Most people who answered are not aware of what they were going to get when they signed up. Some didn't even know if it was mandatory or not.
 - "No idea. But I don't know what the benefits are so I guess they haven't been clearly communicated to me. :)"
 - "I kind of like the fact you don't"
 - "Also, should be able to explain it in a few sentences to anyone who asks."
- See new membership form!



Section 1: Membership

- Do you have an account on Hoiho, the WLUG server (used for either shell access, web hosting or an email account at wlug.org.nz)?
 - 21% yes
- What do you use it for?
 - Connectivity testing
 - Administering the machine in second place!
- Have you borrowed a book from our library?
 - 28% yes

6. Do you have an account on Hoiho, the WLUG server (used for either shell access, web hosting or an email account at wlug.org.nz)?

Answer	Count	Percentage
No answer	29	50.88%
Yes (Y)	12	21.05%
No (N)	16	28.07%

7. What do you use it for?

- Remote connectivity testing
- Useful shell account
- Administering the box

8. Have you borrowed a book from our library?

Answer	Count	Percentage
No answer	1	1.75%
Yes (Y)	16	28.07%
No (N)	40	70.18%



Section 2: Meetings

- Have you been to a WLUG meeting in the last year?
 - 64% yes
- Did you enjoy it?
 - 100% yes
 - Most people happy (many "don't change a thing")
 - Good balance

1. Have you been to a WLUG meeting in the last year?

Answer	Count	Percentage
No answer	0	0.00%
Yes (Y)	36	63.16%
No (N)	21	36.84%

2. Did you enjoy it?

Answer	Count	Percentage
No answer	22	38.60%
Yes (Y)	35	61.40%
No (N)	0	0.00%



(Haven't been) Why not?

- Live outside of area
No time
Antisocial person
- "Greig scares me"

3. Do you have any comments or suggestions based on this years meetings?

- Most people happy (many "don't change a thing")
- Good balance
- "There seems to be very little hands-on/bring a box meetings."

4. (Haven't been) Why not?

- Live outside of area
- No time
- Antisocial person
- "Greig scares me"



What is your overall impression of WLUG meetings, including topics, dates/times and location?

- Good, well organised, "top notch"
- A good range of topics, good guest speakers
- "Moving to a single time through the whole year would be good."
- "The people who attend are very.. 'diverse'"

5. What is your overall impression of WLUG meetings, including topics, dates/times and location?

- Good, well organised, "top notch"
- A good range of topics, good guest speakers
- "Moving to a single time through the whole year would be good."
- "The people who attend are very.. "diverse"



How often should meetings be held?

- 84% monthly

6. How often do you think meetings should be held?

Answer	Count	Percentage
No answer	12	21.05%
Fortnightly (half)	6	10.53%
Monthly (month)	36	63.16%
Bi-monthly (bimon)	1	1.75%
Other (-oth-)	2	3.51%



Please comment on the balance of meetings

- More fixit meetings
- Less fixit meetings
- Would like to see monthly meetings, and in-between workshops.

7. Please comment on the balance of meetings (internal speakers vs. external speakers vs. bring a box etc)

- More fixit meetings
- Less fixit meetings
- Would like to see monthly meetings, and in-between workshops.



Is there anyone you would like to see present a meeting, or any topics you would like covered?

- Linus Torvalds
- Steve Jobs
- RMS
- Bill Gates

8. Is there anyone you would like to see present a meeting, or any topics you would like covered?

- Steve Jobs, Linus Torvalds, RMS, Bill Gates (no Eric Raymond I see)
- More tutorials on advanced topics/howtos
- A session where several members give "My favourite techniques/strategies/tips for useful, trouble-free computing" - how to get the best out of Linux - "what I find most useful" etc.



- No one picked ESR!





Is there anyone you would like to see present a meeting, or any topics you would like covered?

- More tutorials on advanced topics/howtos
- A session where several members give "My favourite techniques/strategies/tips for useful, trouble-free computing" - how to get the best out of Linux - "what I find most useful" etc.



Socialising

- Would you attend a regular social event, such as a monthly Thursday Night Curry or a get-together in a cafe/bar environment?
– 54% yes
- Have you ever been to a WLUG end of year barbeque?
– 23% yes

9. Would you attend a regular social event, such as a monthly Thursday Night Curry or a gettogether in a cafe/bar environment?

Answer	Count	Percentage
No answer	0	0.00%
Yes (Y)	31	54.39%
No (N)	26	45.61%

10. Have you ever been to a WLUG end of year barbeque?

Answer	Count	Percentage
No answer	0	0.00%
Yes (Y)	13	22.81%
No (N)	44	77.19%



I've been to a BBQ

- seems quite "clique-y" - all the uni and ex-uni people hang around together
- Very blokey. I left before the the meat was cooked
- Low participation
- end of year bbq's are wicked.. they rule.
- Backyard cricket was great. I like the fact it's just the group of the people, and not another sit around and nerd (verb) event. I wouldn't go if it was.

Yes:

- seems quite "clique-y" - all the uni and ex-uni people hang around together
- Very blokey. I left before the the meat was cooked
- Low participation
- end of year bbq's are wicked.. they rule.
- Backyard cricket was great. I like the fact it's just the group of the people, and not another sit around and nerd (verb) event. I wouldn't go if it was.



I haven't been to a BBQ

- Out of town, not very social, didn't know
- "I feel guilty about not paying my fees."
- "Felt a little alienated as was new to group"
- "Can never get all the info together on where when and how to get there. its always on again and off again"

No:

- Out of town, not very social, didn't know
- "I feel guilty about not paying my fees."
- Felt a little alienated as was new to group
- "can never get all the info together on where when and how to get there. its allways on again and off again"



Section 3: Mailing list

- Are you subscribed to the WLUG mailing list?
–93% yes

1. Are you subscribed to the WLUG mailing list?

Answer	Count	Percentage
No answer	0	0.00%
Yes (Y)	53	92.98%
No (N)	4	7.02%



On the mailing list

- Yes: Please give your comments on the mailing list: Do you think it is a useful tool? Have you had a problem solved? Are you comfortable with asking for help on the list? Do you think the geographical density is suitable?
 - Overwhelming 'yes to all'
 - "90% is a waste of time, and I probably dont do much to help with that."
 - "No mailing lists are overrated. It's 2005 lets get something a little less 1980's"
 - "The signal-to-noise ratio seems to be getting lower... I hardly read it these days for that reason."

Yes: Please give your comments on the mailing list: Do you think it is a useful tool? Have you had a problem solved? Are you comfortable with asking for help on the list? Do you think the geographical density is suitable?

- Overwhelming 'yes to all'
- "90% is a waste of time, and I probably dont do much to help with that."
- "No mailing lists are overrated. It's 2005 lets get something a little less 1980's"
- "The signal-to-noise ratio seems to be getting lower... I hardly read it these days for that reason."



Not on the mailing list

- I am about to sign up for it. If you havent already it would be good to see some real basic info, like primary school level stuff re: how linux exists on your pc, its build concept etc. from my surfing on the net for this info it seems to be over looked or only partially covered. We need to re-educate people on a fundamental level so we can get more adopters of this technology. Quote "most end users have the technical aptitude of a banana" and yes 80% of pc users are like this

No: Could we make it more relevant for you?

- I am about to sign up for it. If you havent already it would be good to see some real basic info, like primary school level stuff re: how linux exists on your pc, its build concept etc. from my surfing on the net for this info it seems to be over looked or only partially covered. We need to re-educate people on a fundamental level so we can get more adopters of this technology. Quote "most end users have the technical aptitude of a banana" and yes 80% of pc users are like this



Section 4: Wiki

- Have you used the WLUG Wiki?
 - 92% yes
- Have you contributed content to the wiki?
 - 58% yes
- Do you have any comments on the relicensing process we recently underwent?
 - Positive, successful
 - Matt Brown should be singled out for his work

1. Have you used the WLUG Wiki? (the software that runs the website www.wlug.org.nz)

Answer	Count	Percentage
No answer	0	0.00%
Yes (Y)	52	91.23%
No (N)	5	8.77%

2. Have you contributed content to the wiki?

Answer	Count	Percentage
No answer	5	8.77%
Yes (Y)	33	57.89%
No (N)	19	33.33%

3. Do you have any comments on the relicensing process we recently underwent?

- Positive, successful
- Matt Brown should be singled out for his work



Wiki continued

- Why not? Is there anything we could do to make your contribution easier?
 - Not qualified/nothing to say
 - "I personally am not comfortable with changing someone else's page/work even though I know it is 'public' domain"
 - "Yeah, I read what I can and I still don't get it. If I could submit a text file to someone I would possibly contribute, but I don't really get what you want or what you are trying to achieve"
- (No wiki use) What could we do to make the wiki easier to use or more relevant to you?
 - New user content
 - I hear it's good but just haven't looked yet

4. Why not? Is there anything we could do to make your contribution easier?

- Not qualified/nothing to say
- "I personally am not comfortable with changing someone else's page/work even though I know it is "public" domain"
- "Yeah, I read what I can and I still don't get it. If I could submit a text file to someone I would possibly contribute, but I don't really get what you want or what you are trying to achieve"

5. (No wiki use) What could we do to make the wiki easier to use or more relevant to you?

- New user content
- I hear it's good but just haven't looked yet



Wiki continued

- Do you think that the web site makes information easily accessible? Can you find meeting information easily? What would you change?
 - Equal split between 'yes' and 'no' - meeting information hidden away primary complaint
 - Fonts
 - People who just don't like or get wikis

6. Do you think that the web site makes information easily accessible? Can you find meeting information easily? What would you change?

- Equal split between 'yes' and 'no' - meeting information hidden away
- Fonts
- People who just don't like or get wikis



Section 5: Installfest

- Did you attend the 2005 Installfest?
40% yes
- 7 organisers, 8 helpers
- 3 participants, 3 visitors
- Retention is really bad

1. Did you attend the 2005 Installfest?

Answer	Count	Percentage
No answer	0	0.00%
Yes (Y)	23	40.35%
No (N)	34	59.65%

2. What would you classify yourself as having gone as?

Answer	Count	Percentage
A helper	8	35%
A participant	3	13%
A visitor	3	13%
An organiser	7	30%
Other	2	9%



What was your impression of the organisation of the event/your impression of society based on the installfest

- Excellent/impeccable/better organised than 2004/shame more people didn't attend
- Run presentations
- "Perhaps the best event of the year in terms of bringing in fresh blood. Although I'm not sure if we've succeeded in keeping those people involved."
- "Very friendly and enjoyable. A good impression to the public."
- "The Ubuntu bias and the insistence on unrealistically high-specced machines must have put many people off. I know of several."

3. What was your impression of the organisation of the event/your impression of society based on the installfest?

- Excellent/impeccable/better organised than 2004/shame more people didn't attend
- Run presentations
- "Perhaps the best event of the year in terms of bringing in fresh blood. Although I'm not sure if we've succeeded in keeping those people involved."
- "Very friendly and enjoyable. A good impression to the public."
- "The Ubuntu bias and the insistence on unrealistically high-specced machines must have put many people off. I know of several."



Installfest

- Describe the state of your computer when you left the installfest:
 - good/happy/working
- Would you attend another installfest, perhaps as a helper?
67% yes
 - Live out of town
 - No time
 - "Blind leading the blind!"
- I didn't go:
 - Busy, out of town
 - "Wife isn't keen."
 - "It was Ubuntu centric and I am a Mepis-KDE person. Knowledge level on lower end. Possible to attend as a secondary helper."
- **Fix impressions!**

4. Describe the state of your computer when you left the installfest:

- good/happy/working

5. Would you attend another installfest, perhaps as a helper?

Answer	Count	Percentage
No answer	11	19.30%
Yes (Y)	38	66.67%
No (N)	8	14.04%

6. Why not?

- Live out of town
- No time
- "Blind leading the blind!"

7. Didn't go:

- Busy, out of town
- "Wife isn't keen."
- "It was Ubuntu centric and I am a Mepis-KDE person. Knowledge level on lower end. Possible to attend as a secondary helper."



Section 6: Charter

- Do you feel we are meeting our goals with regard to the charter? 78% yes, 22% half, 0% no
- How half?
 - "Falling short on advocacy to regional government and business"
 - "By reaching more people - easier said than done. I see from your next question that you are planning something for this. More events suitable for those on the lower parts of the learning curve."
 - "Attract a larger and more influential group of people."
 - "by being more anti-Microsoft"
- If we arranged a Linux promotion or advocacy event, would you be interested in taking part? 82% yes

1. Do you feel we are meeting our goals with regard to the charter?

Answer	Count	Percentage
No answer	24	42.11%
Yes (yes)	24	42.11%
No (no)	0	0.00%
Partially (half)	9	15.79%

2. No:

- "Falling short on advocacy to regional government and business"
- "by being more ant-Microsoft"
- "By reaching more people - easier said than done. I see from your next question that you are planning something for this. More events suitable for those on the lower parts of the learning curve."
- "Attract a larger and more influential group of people."

3. If we arranged a Linux promotion or advocacy event, would you be interested in taking part?

Answer	Count	Percentage
No answer	13	22.81%
Yes (Y)	36	63.16%
No (N)	8	14.04%



Section 7: Committee

- Do you think the committee have effectively represented the interests of the WLUG members?
 - 95% yes
- In the last year, have you read the minutes of a committee meeting?
 - 42% yes
- Would you be interested in standing for election for '05/'06?
 - 14% (8 respondents)

1. Do you think the committee have effectively represented the interests of the WLUG members?

Answer	Count	Percentage
No answer	22	38.60%
Yes (Y)	33	57.89%
No (N)	2	3.51%

3. In the last year, have you read the minutes of a committee meeting?

Answer	Count	Percentage
No answer	0	0.00%
Yes (Y)	24	42.11%
No (N)	33	57.89%

4. Would you be interested in standing for election for '05/'06?

Answer	Count	Percentage
No answer	8	14.04%
Yes (Y)	8	14.04%
No (N)	41	71.93%



Section 7: Committee

- What should the 2005/2006 committee do differently?
 - "Be kind. (Most are, some people in particular have a little attitude problem)"
 - "strive offer basic conceptual knowledge to a broader spectrum of people"
 - "More focus on bringing new people into the LUG. Co-ordinate more with other LUGS."
 - "reduce the amount of idle chatter and sarcasm on the mailinglist and in the chat room."
 - "Take off the Ubuntu blinkers"

2. What should the 2005/2006 committee do differently?

- "Be kind. (Most are, some people in particular have a little attitude problem)"
- "strive offer basic conceptual knowledge to a broader spectrum of people"
- "More focus on bringing new people into the LUG. Co-ordinate more with other LUGS."
- "Take off the Ubuntu blinkers"
- "reduce the amount of idle chatter and sarcasm on the mailinglist and in the chat room."



Section 8: Affiliations

- Are you employed (or self employed) to work with Linux/open source software?
 - 56% yes
- Are you a member of the New Zealand Open Source Society?
 - 12% yes
- Have you participated in NZOSS mailing lists or visited their website in the last year?
 - 37% yes
- Are you a member of the New Zealand Computer Society?
 - 1.75% yes

1. Are you employed (or self employed) to work with Linux/open source software?

Answer	Count	Percentage
No answer	4	7.02%
Yes (Y)	32	56.14%
No (N)	21	36.84%

2. Are you a member of the New Zealand Open Source Society?

Answer	Count	Percentage
No answer	2	3.51%
Yes (Y)	7	12.28%
No (N)	48	84.21%

3. Have you participated in NZOSS mailing lists or visited their website in the last year?

Answer	Count	Percentage
No answer	1	1.75%
Yes (Y)	21	36.84%
No (N)	35	61.40%

4. Are you a member of the New Zealand Computer Society?

Answer	Count	Percentage
No answer	1	1.75%
Yes (Y)	1	1.75%
No (N)	55	96.49%



Section 8: Affiliations

- Are you subscribed to the NZLUG mailing list?
 - 37% yes
- Do you believe there is room for a national LUG co-ordination body that promotes relationships between use groups and helps with resourcing?
 - 82% yes
- Should such a body exist within NZOSS?
 - 50% yes, 35% 'other'

5. Are you subscribed to the NZLUG mailing list?

Answer	Count	Percentage
No answer	1	1.75%
Yes (Y)	21	36.84%
No (N)	35	61.40%

6. Do you believe there is room for a national LUG co-ordination body that promotes relationships between use groups and helps with resourcing?

Answer	Count	Percentage
No answer	8	14.04%
Yes (Y)	47	82.46%
No (N)	2	3.51%

7. Should such a body exist within NZOSS?

Answer	Count	Percentage
No answer	22	38.60%
Yes (yes)	17	29.82%
No (no)	6	10.53%
Other (-oth-)	12	21.05%



Section 9: Geek

- How many years have you been using Linux or other Open Source Unices for?
 - Total 380.5 years of experience!
 - Average 6.68 years, std deviation 3.7
 - Minimum 0
 - Maximum 17

1. How many years have you been using Linux or other Open Source Unices for?

Calculation	Result
Sum	380.5
Standard Deviation	3.6926803226827
Average	6.6754385964912
Minimum	0
1st Quartile (Q1)	3.5
2nd Quartile (Median)	7
3rd Quartile (Q3)	10
Maximum	17



What do you run?

OS/Distribution	Responses	% Total	% OSS
Ubuntu	23	31%	38%
Debian	17	23%	28%
Fedora	10	14%	16%
Windows	9	12%	
Mac	4	5%	
Slackware	3	4%	5%
BSD	2	3%	3%
Gentoo	2	3%	3%
SUSE	2	3%	3%
Mandrake	1	1%	2%
Mepis	1	1%	2%

2. What OS/distribution do you primarily run?

74 answers:

Answer	Count	Percentage	Percentage of OS Unix
Ubuntu	23	31%	38%
Debian	17	23%	28%
Fedora	10	14%	16%
Windows	9	12%	-
Mac	4	5%	-
Slackware	3	4%	5%
BSD	2	3%	3%
Gentoo	2	3%	3%
SUSE	2	3%	3%
Mandrake	1	1%	2%
Mepis	1	1%	2%



Recommendations

OS/Distribution	Responses	% Total	% OSS
Ubuntu	30	48%	63%
Windows	9	15%	
Fedora	6	10%	13%
Mac	5	8%	
Knoppix	4	6%	8%
Debian	2	3%	4%
Slackware	2	3%	4%
Gentoo	1	2%	2%
Mandrake	1	2%	2%
Mepis	1	2%	2%
SUSE	1	2%	2%

3. What OS/distribution do you recommend to non computer expert friends, and why?

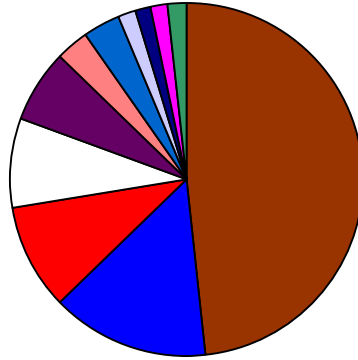
62 answers:

Answer	Count	Percentage	Percentage of OS Unix
Ubuntu	30	48%	63%
Windows	9	15%	-
Fedora	6	10%	13%
Mac	5	8%	-
Knoppix	4	6%	8%
Debian	2	3%	4%
Slackware	2	3%	4%
Gentoo	1	2%	2%
Mandrake	1	2%	2%
Mepis	1	2%	2%
SUSE	1	2%	2%



Recommendations

Which OS/distribution do you recommend to non computer expert friends?

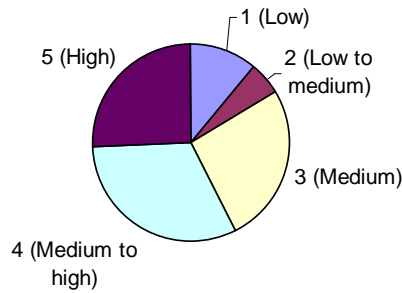


- Ubuntu
- Windows
- Fedora
- Mac
- Knoppix
- Debian
- Stackware
- Gentoo
- Mandrake
- Mepis
- SUSE



Proficiency

- How would you rate your proficiency with your Linux/OS Unix of choice? (1 low, 5 high)



- Does your primary PC dual boot?
- 44% yes

4. How would you rate your proficiency with your Linux/OS Unix of choice? (1 low, 5 high)

Answer	Count	Percentage
No answer	3	5.26%
1 (1)	6	10.53%
2 (2)	3	5.26%
3 (3)	14	24.56%
4 (4)	17	29.82%
5 (5)	14	24.56%

5. Does your primary PC dual boot?

Answer	Count	Percentage
No answer	1	1.75%
Yes (Y)	25	43.86%
No (N)	31	54.39%



Geek

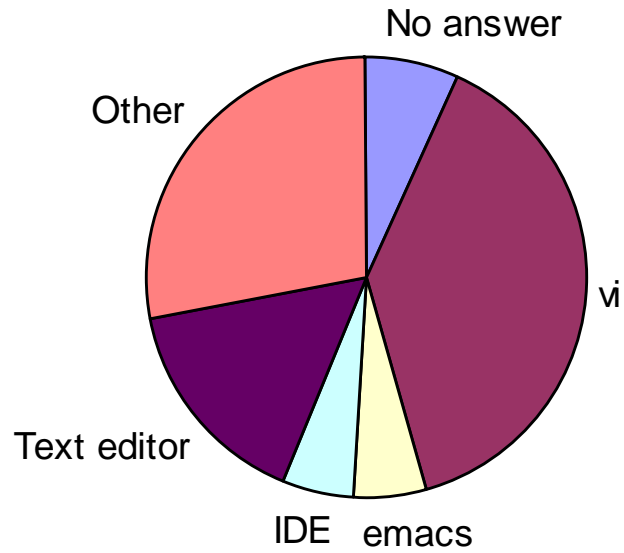
- How many computers do you administer in your household?
 - Total 239
 - Average 4.3, std dev 2.4
 - Minimum 1
 - Maximum 15

6. How many computers do you administer in your household?

Calculation	Result
Sum	239
Standard Deviation	2.4163954222632
Average	4.2678571428571
Minimum	1
1st Quartile (Q1)	2.25
2nd Quartile (Median)	4
3rd Quartile (Q3)	5
Maximum	15



Favourite editor

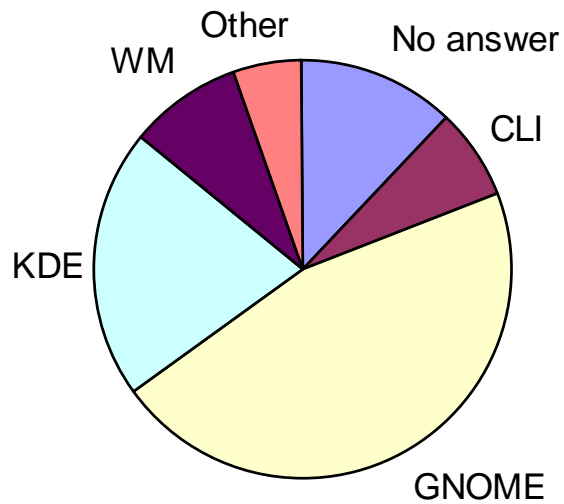


7. Favourite editor?

Answer	Count	Percentage
No answer	4	7.02%
vi (vi)	22	38.60%
emacs (emacs)	3	5.26%
Part of an IDE	3	5.26%
System text editor	9	15.79%
Other (-oth-)	16	28.07%



Desktop environment



8. Preferred Free desktop environment?

Answer	Count	Percentage
No answer	7	12.28%
Command line only	4	7.02%
GNOME (GNOME)	26	45.61%
KDE (KDE)	12	21.05%
XFCE (XFCE)	0	0.00%
Enlightenment (E16)	0	0.00%
Just a window manager	5	8.77%
Other (-oth-)	3	5.26%



Prize draw